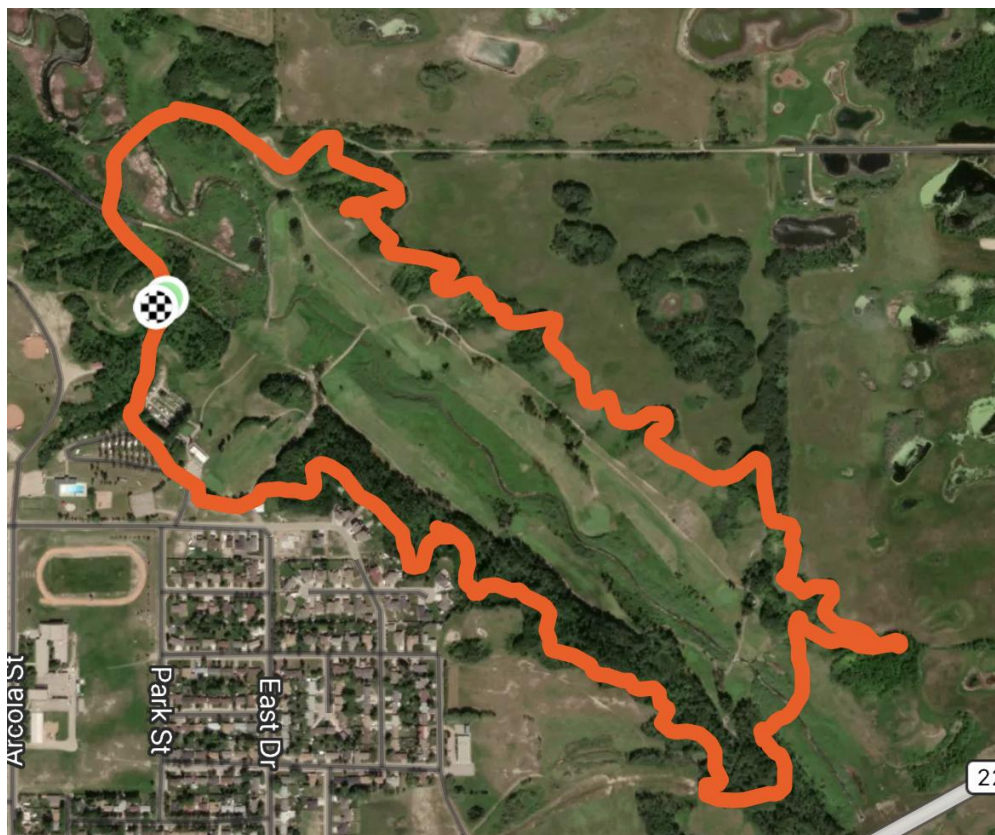




2022 Sask Cup XC MTB

May 15



Race course description and walkthrough

EQC is proud to host the 2022 XC MTB SaskCup #1. The course winds around, down, up, and back around the Kaposvar valley on the North side of Esterhazy. The course is a flow course with a few punchy climbs, rock gardens, and some rollers and is mostly singletrack with some gravel and grass doubletrack passing sections. You can expect 5 km of distance and 101 m of elevation gain per lap. There are 7 bridges to cross with half of them on the professionally built 1.6 km segment known as the nature trail, and the other half alongside or over the Kaposvar Creek.

The course may have some small changes made to it before race day: The start loop last year was 0.79 km long that took us up the gravel hill, turning left towards the ball diamonds, and then left down the grassy trail on the ski hill followed by a right hand turn onto the race course to climb the screeching J segment. Every lap you will turn left to go up the screeching J. When you get to the top of the screeching J you will make a slight left hand turn and follow the campground road, seeing the tech zone and feed zone on the other side of campsite #12. Keep going across the golf course road towards the nature trail sign and follow the cart path to the walking trail entrance sign and drop into the trail. At the end of the walking trail you will see a large arc bridge with no railings, go across that and down the valley on the Kapo Kraze, cross the boardwalk and Hood's Crossing bridge and climb up the other side. You'll see a right turn arrow and continue heading to the far East before winding back and popping out on the old grassy trail where you hang a right then another left to continue on course. As you ride you'll dip, twist, and climb continuing until you exit at the gravel road that descends down onto Millenium Bridge. Enjoy the little roller and gravel after and turn left to go towards the sandy road and the finish or make that left turn to go up the Screeching J again.

FAQs

Where do I park?

At the Wildlife Federation (Scout) Hall. Go straight North on Arcola St. into the ball diamonds and it will be on your right.

Where are the Washrooms?

Use the campground / swimming pool washrooms if they are open. You can also use the scout hall washrooms.

Where is Registration?

Wildlife Federation (Scout) Hall

Where will the Awards and meal be?

Wildlife Federation (Scout) Hall

Where are the Tech and Feed Zones?

At this time they are planned to be right after the Screeching J climb alongside the campground road behind site #12.

Where is the start / finish?

In the bottom of the valley. If you go backwards on the course and descend the Screeching J climb you will turn right after the bridge and you will be at the finish area. The start area will be on the gravel road that runs beside but to the North-East of the sandy road leading into the finish area.

Since you recommend pre-riding, where can I spend the night?

Regional Park Campground - at race course. Call (306) 745-6456

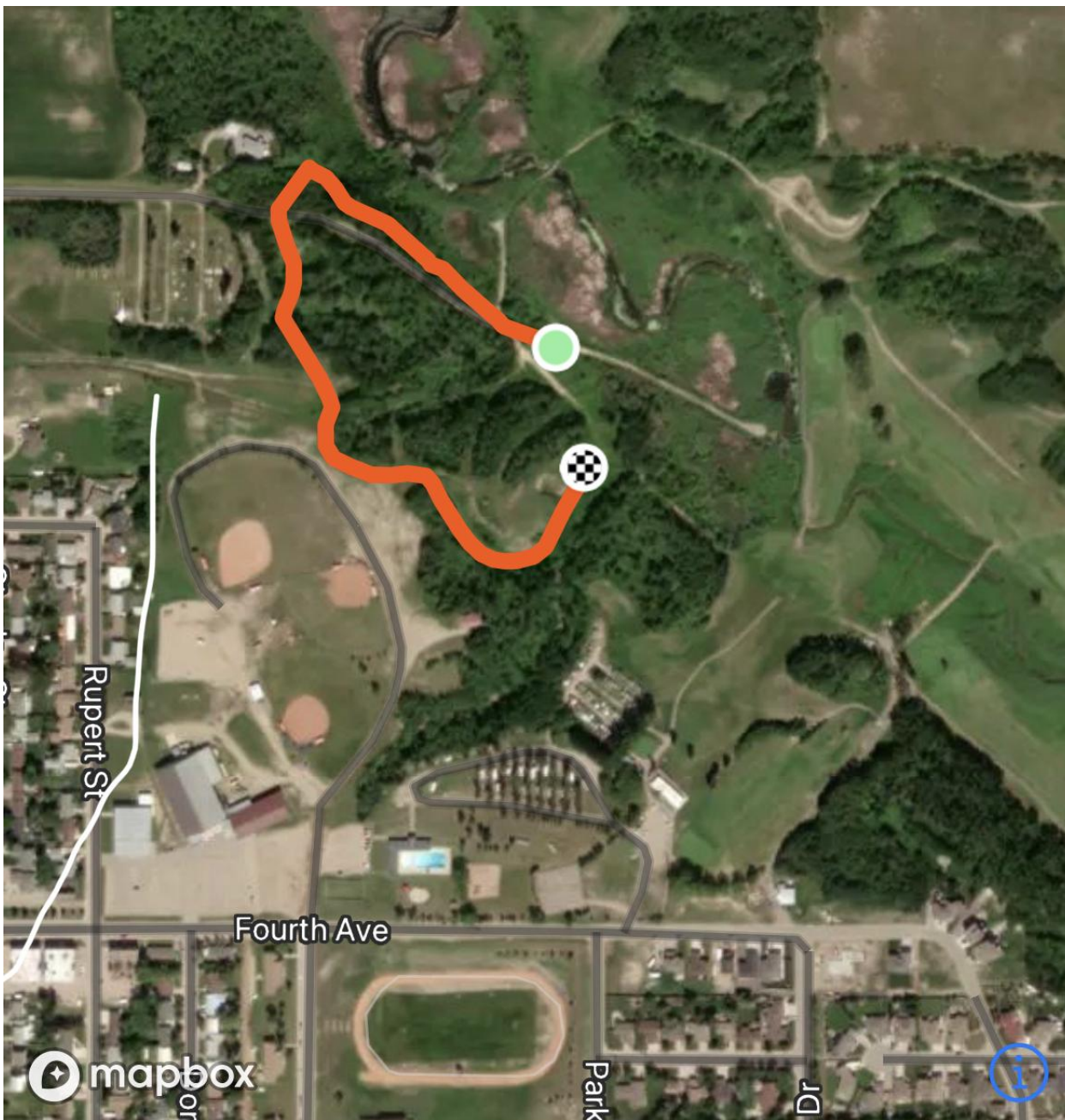
Canalta Hotel - Call (306) 745-3644

Western Star Hotel - Call (306) 745-5600

Wander Inn - Call (306) 745-6647

There is also a "budget" option at the Motor Hotel

Proposed Start Loop map - note the red roof of the Wildlife Federation hall just to the East of the ball diamonds.



Number of laps:

1,2,3,4, or 5 depending on gender, and ability category

Schedule:

The course will be marked and ready for pre-riding Saturday afternoon. Staging will occur 10-15 minutes before 11. It is strongly encouraged to pre-ride the course. This isn't the Granny Oak's with the tight trees but there are rollers and off camber turns that can cause you to get some air that you weren't expecting.

Sunday

9:45 AM registration (Wildlife Hall)

10:45 AM staging (tentatively at bottom of valley, see green dot on start loop map)

11:00 AM race start in waves

12:30 AM first meals ready (Wildlife Hall)

1:15 PM results and prizes (Wildlife Hall)



The Boardwalk



Rocky Road (each lap), the ski hill (follow on the start loop)

The East Qu'Appelle Cartel is looking forward to welcoming you to our trail system. The course is rideable at all ability levels and will be closed to the public the day before and on race day during pre-riding and racing.

Registration Link: [Click here to register](#) open until May 13, 2022

We'd like to thank our generous sponsors including but not limited to: Western Cycle Source for Sports, Dr Knezacek Optometry, Parkland Manufacturing
